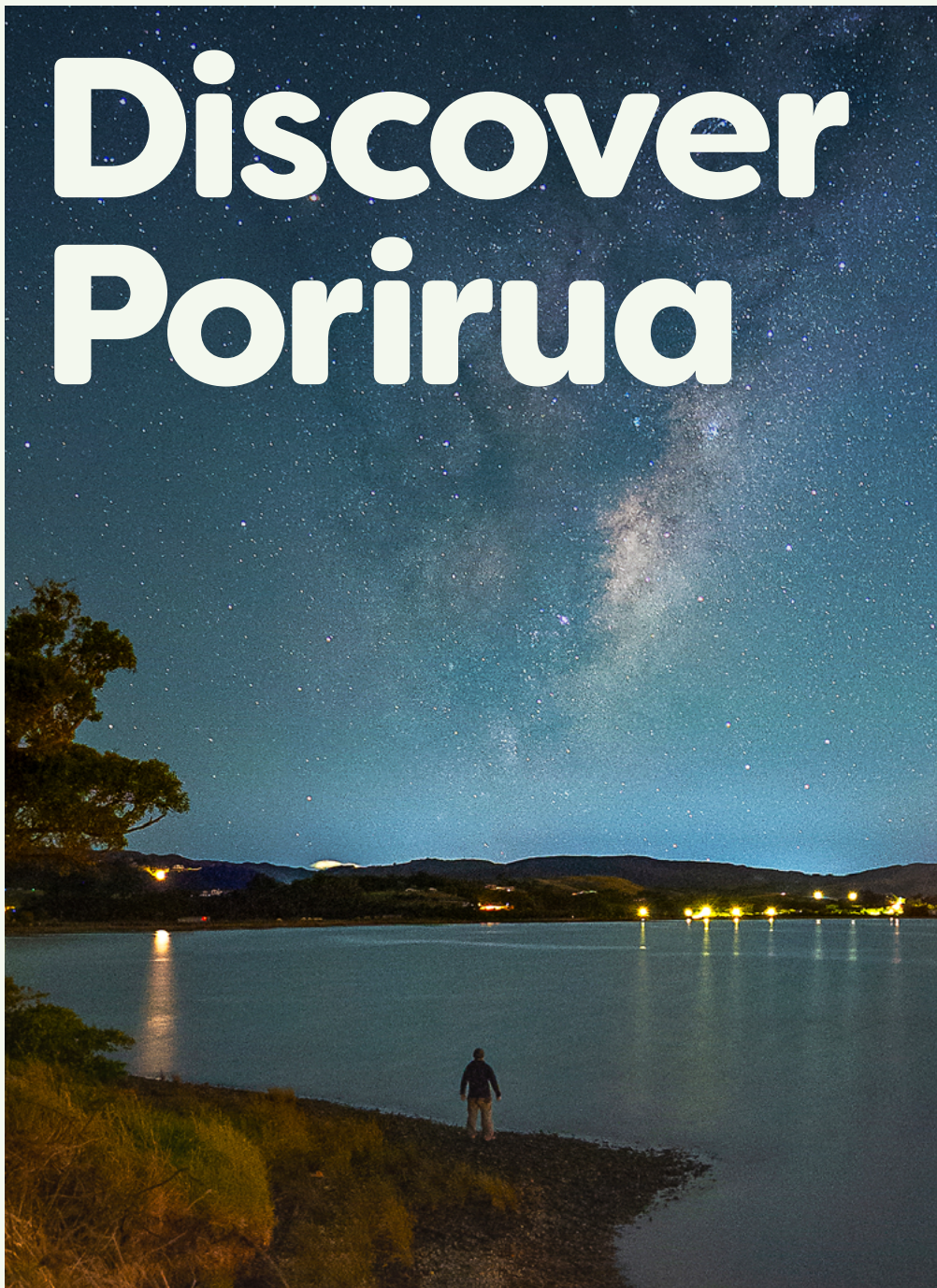


Discover Porirua



Your guide to winter 2022

poriruacity

Stargazing in Porirua



“Simply getting out with a warm coat, a hot chocolate and looking up at the stars is a privilege many people in cities around the world don’t get to experience.”

Local astrophotographer **Frank Hopfler** shares why he loves the wide expanse of our universe from Porirua’s night skies.

“Porirua is a great destination for night sky photography as we’re further away from the bright lights of Wellington City.

I search for areas away from streetlights, or with as little light pollution as possible, to capture the night sky. My favourite places for great photos are Pāuatahanui, Titahi Bay, Pukerua Bay and Whitireia. A cloudless night is best. During the new moon phase, or with no moon present, stars will be more visible, which is ideal.

I often prefer cold winter nights – it gets darker earlier in the evening but also allows me to capture the Milky Way’s galactic centre with various parts of Porirua in my foreground.”

 @frankhopfler

Whoa, it's time to WOAP!

Get your stretchy pants ready and prep your taste buds! This August Porirua is celebrating Visa Wellington On a Plate with signature burgers, events and a cocktail.

Visa WOAP is New Zealand's biggest annual culinary festival and we're excited to showcase the skill, creativity, and diversity that's on the menu from Porirua.

For more info, visit: visawoap.com



Sandbar Mana

📍 109 Mana Esplanade, Paremata

Burger:

Las Can-Eat-Us

Cocktail:

One Night in Jalisco



Get Fixed Bicycle Café

📍 10 Wi Neera Drive

Burger:

Get Smashed

Pop-up event:

All About Bicycles: The Basics with Beers

Food + Drink + Art

Experience a feast for your senses at Pātaka – one night only! Against a backdrop of awe-inspiring art enjoy a wide range of bite-sized dishes from Porirua's most inventive chefs, accompanied by craft beer, specialty vodka and locally brewed kombucha.

**Thursday 11 August,
6–7.30pm & 8–9.30pm**

📍 Pātaka Art + Museum,
17 Parumoana Street

To book your spot go to
visawoap.com



Gear Eatery and Bar

📍 1 Okawai Road, Aotea

Burger:

The Homestead Butcher

New wheels in town

FS Cycles, Porirua's newest independent bike shop, specialises in selling and servicing mountain bikes, downhill bikes, and BMX bikes, and offers gear from specialist brands.



📍 2 Serlby Place
📱 [fscyclesnz](https://www.facebook.com/fscyclesnz) or visit: [fscycles.co.nz](https://www.fscycles.co.nz)



You can expect high levels of care, expertise, and tailored advice from this passionate team, spearheaded by father and son owners, Theo and Todd Kaspers, and rounded out by fellow bike mechanic Simon Farmer. We asked Todd to share his favourite rides.



For fearless MTB fans

📍 Te Ara a Rangituhi

You can't beat the mountain biking trails at Te Ara a Rangituhi. Don't miss Crash Palace, an expert 0.8km downhill trail and Tumeke, an intermediate 1.2km downhill trail.



For picnicking families

📍 Te Ara Piko

Enjoy an easy, flat ride along Te Ara Piko. Take in the picturesque views of Pāuatahanui Inlet and stop for a picnic along the way at Motukaraka Point Reserve.



For beach lovers

📍 Onehunga Bay

Start at Onepoto Road by the boatsheds and follow the Whitirea Park trail around Te Awarua-o-Porirua Harbour. Then cool off with a dip in the sea at Onehunga Bay.

PĀTAKA

Our winter exhibitions



Jack Trolove: Thresholding

24 July – 30 October 2022

Te Tai Tokerau based painter, Jack Trolove makes large-scale gestural paintings that he thinks of as “second skins for us to feel through”. Created using swathes of oil paint, in thick lumps and thin

stretches, enormous faces appear and recede simultaneously. Unique to this exhibition, oil paintings will disappear and reappear, will wake and sleep, under modulated lighting – passing through dusk, 2am, dawn.

Discover Porirua

Star Gossage: Kia tau te Rangimarie – Let Peace be Among Us

24 July – 30 October 2022

Star Gossage (Ngāti Wai/Ngāti Ruanui) draws her inspiration from the ancestral land of Pākiri, north of Auckland, and invites the viewer into her inner world.

She paints enigmatic figures in shifting landscapes that explore emotion and memory, journeys of loss and endurance, and the relationships with immediate whānau and tūpuna.



Faces from Pātaka's collection

24 July – 30 October 2022

We've been collecting objects reflecting the history of Porirua for the nearly 25 years. This exhibition showcases many of these different objects by focusing on faces of every kind and form imaginable.



Winter 2022



Photo: Isaac Te Reina

Future perfect in Porirua

Kauri Leach, a talented 15-year-old from Waitangirua, took part in the acclaimed Te Ahu Taiohi production, which screened at the 2022 New Zealand Arts Festival. Fusing kapa haka, movement, and storytelling, it shared the dreams and experiences of Porirua youth.

How did you get involved in performing arts?

I've been doing kapa haka my whole life as I was brought up with it. It was also how I found Te Ahu Taiohi, a place to challenge my confidence. Since joining Te Ahu Taiohi, I've been doing dancing and acting too – it's opened so many possible careers for me.

What is your favourite way of expressing yourself in performing arts?

For me, most definitely – acting. It just brings out so many emotions and gives you a chance to express yourself fully, no matter if the topic is something deep or very upbeat. I know it sounds ironic but acting can really help people express themselves and their emotions better.

What inspires you?

Anyone that has different interests than me. When I surround myself with people that have different interests, I always have the confidence and guidance to try new things safely.

Where is your favourite place to grab a bite in Porirua?

Back when it was around, my favourite place to eat was at the Hungry Tiki at Waitangirua mall. Me and my mum used to always go over there and have massive feeds! Nowadays, I just like to stuff my face with One Sushi or occasionally, good old Maccas.

What are your favourite places in Porirua?

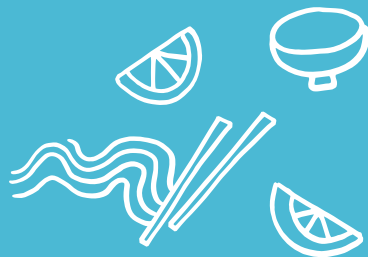
If I want to relax I go to Plimmerton Beach to watch the beautiful sunsets, Paremata Beach is for fun with friends, throwing sand at each other and jumping off the bridge. I've made a lot of memories there! For a quiet place I love to walk through Bothamley Park, otherwise I'm hanging out with my mates in Cobham Court.

What do you like about living in Porirua?

One of my favourite things about Porirua is our diversity. We've so many different people from different cultures, with different interests and backgrounds – it's fascinating! I love the range of foods that we have, the forestry and bush walks, the amazing views that most of our colleges have, and our iwi Ngāti Toa.



New in town: Aroy



From the soft halo light of their 'Kia Ora Porirua' sign to the aroma of Thai flavours wafting in the air, eating at Aroy will delight your senses and fill your tummy, but not strain your budget.

The portion sizes are generous, there are vegan and gluten-free options available and the friendly staff will make you feel at right home.

Discover Aroy

- 📍 3B Kilkerran Place, Porirua CBD
- 📷 @aroythaieatery
- 📘 aroythainz

Get to the Arena!

Dozens of awesome events take place at Te Rauparaha Arena, which also has a fantastic gym, stadium and pool.

Come and make a splash at **Arena Aquatics** where everything is included with entry! There's lane swimming, aqua jogging, spas, sauna and a steam room for the adults. The wave pool, hydro slide, lazy river, inflatables and toddler's pool will keep the kids entertained for hours. In need of a workout outside the pool? Join **Arena Fitness** to enjoy Porirua's only Les Mills group fitness classes, and membership includes free access to all the pool facilities.

If you want to gain water confidence or learn to swim, then **Dash Swim School** can help. More than 20,000

people have learned to be safe and strong swimmers with Dash. It's not just for the kids – anyone can learn lifesaving skills or improve their technique with Dash.

Arena Activities offer a wide range of fun for all ages including the ever-popular Kindy Gym for tamariki. And the latest cool activity you can try at Te Rauparaha Arena is pickleball!

📍 **17 Parumoana Street**

Visit terauparaha-arena.co.nz for a full programme of what's on.



The art of craft

Beer lovers rejoice! Porirua is firmly on the craft beer map, with two cool new spots to sample some delicious brews.



The Beer Engine

Nestled in picturesque Titahi Bay, The Beer Engine is a craft beer experience too good to pass up. With indoor and outdoor seating, can and rigger-filling options and food from local favourite t bay café, you can't go wrong. Make a day of it in the Bay.



📍 31 Whitehouse Rd, Titahi Bay
📱 BeerEngineNZ



Discover Porirua



Abandoned Brewery

Newly established in the heart of Porirua, Abandoned is a true micro-brewery with a never say die attitude. With an array of bevies on tap, there's something for every beer fan. Stay and sip or grab a takeaway. Karagee Kid's tasty eats are the perfect match for your brew of choice.



📍 20 Parumoana St
📱 AbandonedBrewery



Holiday fun checklist

There's plenty for our tamariki to do – indoors or out!

- Try the delicious real fruit ice cream and smoothies at City Green.
- Challenge yourself on the high wire course at Adrenalin Forest.
- Have a workout at the new city centre gym Bubs in Tow.
- Try the VR games and bowling at North City Tenpin & VR Arcade.
- Pack a picnic and head to Battle Hill Farm Forest Park.
- Visit the Pātaka children's gallery and grab a treat at Kaizen Café.
- Get your thrills go-kart racing at Porirua Indoor Raceway.
- Explore the wild, rugged coastline walks of Pukerua Bay.
- Get bouncing or climbing at Awesome Bounce.
- Have a splashing good time at Arena Aquatics.
- Go fly a kite in the wide, open spaces of Ngāti Toa Domain.
- Enjoy food and fun at Laughalots indoor amusement park.
- Enjoy harbourside fun at Pirate's Cove Adventure Golf.
- Head to Spicer Botanical Park for family friendly bike trails.
- Bike or roller skate along the Harbourside Path, then enjoy a bite at Get Fixed Bicycle Café.
- Check out Porirua Libraries' holiday programmes in July and October.

Get on the case



Put your detective hat on and visit this interactive museum which offers a wide range of activities, games, historic items, and guided tours that will entertain the whole family.

Examine the evidence and solve a crime, try on a New Zealand Police uniform, take a photo on a Police bike, learn more about how infamous crimes were solved, and so much more!

 Royal New Zealand Police College, Papakōwhai Road, Porirua
 @nzpolicemuseum



Walks for all weather

Hitting the trails in winter is the perfect way to either warm up or catch that precious but elusive sunshine.



Rangituhi

If there's wind or rain about, head for the shelter of the trees! A walk up Rangituhi will get the blood pumping and you'll soon forget the cold. Take the steps, or a slower amble via Te Ara Utiwai.



Camborne/Te Ara Piko

On a sunny winter's day Pāuatahanui Inlet can be truly stunning. Wander past the iconic boatsheds of the Camborne Walkway or, if you're up for a longer walk, Te Ara Piko goes around the northern side of the inlet.



Love Local Porirua Expo is back

Saturday 30 July, 10am-4pm

📍 Te Rauparaha Arena | Free entry

Let's show some love to our Porirua businesses who have really felt the impact of the Covid-19 pandemic. For the third year running, Love Local will put a spotlight on what Porirua has to offer. Come and make a day out of it!

- Market stalls and exhibitors
- Local businesses
- Activities for tamariki
- Yummy local kai
- Community groups

For more info visit

poriruacity.govt.nz/lovelocalexpo

Join us for Matariki in Porirua

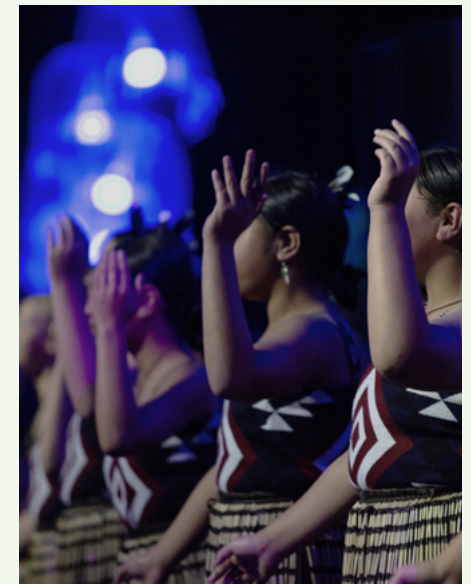
24 June – 3 July

Matariki is a time to come together with loved ones, share stories and kai, and honour those who have passed away.

Come and join us at our annual Matariki festival of events and activities – there's something for everyone!

For details visit

poriruacity.govt.nz/matariki





Perfect pairings

Grab a lead, some dog treats and come on over for a great day out with your pooch. Porirua has plenty of dog-friendly spaces that are fun for hounds and humans!



Ata Morning
Pet Spa
 6 Serlby Place, Porirua City Centre

Bring your fluffy best friend to the highly rated Pet Spa. They specialise in a range of grooming services to get your pet looking smart and dapper.



Ahihi Afternoon
Peppermill Café & Bar
 4 Norrie Street, Porirua City Centre

Stroll over to Peppermill for freshly brewed Mojo coffee, sit back with the paper and enjoy delicious food from the bursting cabinet or their legendary menu.



Ata Morning
Ngāti Toa Domain
 6F Pascoe Avenue, Paremata

Go to the dog exercise area on the beach, perfect for a fun game of catch, or take a long walk on the Ara Harakeke pathway.



Ahihi Afternoon
Ruby's Café
 99 Mana Esplanade, Mana

Head over to this favourite local spot, known for its great coffee, tasty treats, and delicious kai! Dogs are very welcome in the outside seated area.



Ata Morning
Southern Cliffs
 Beach Road, Titahi Bay

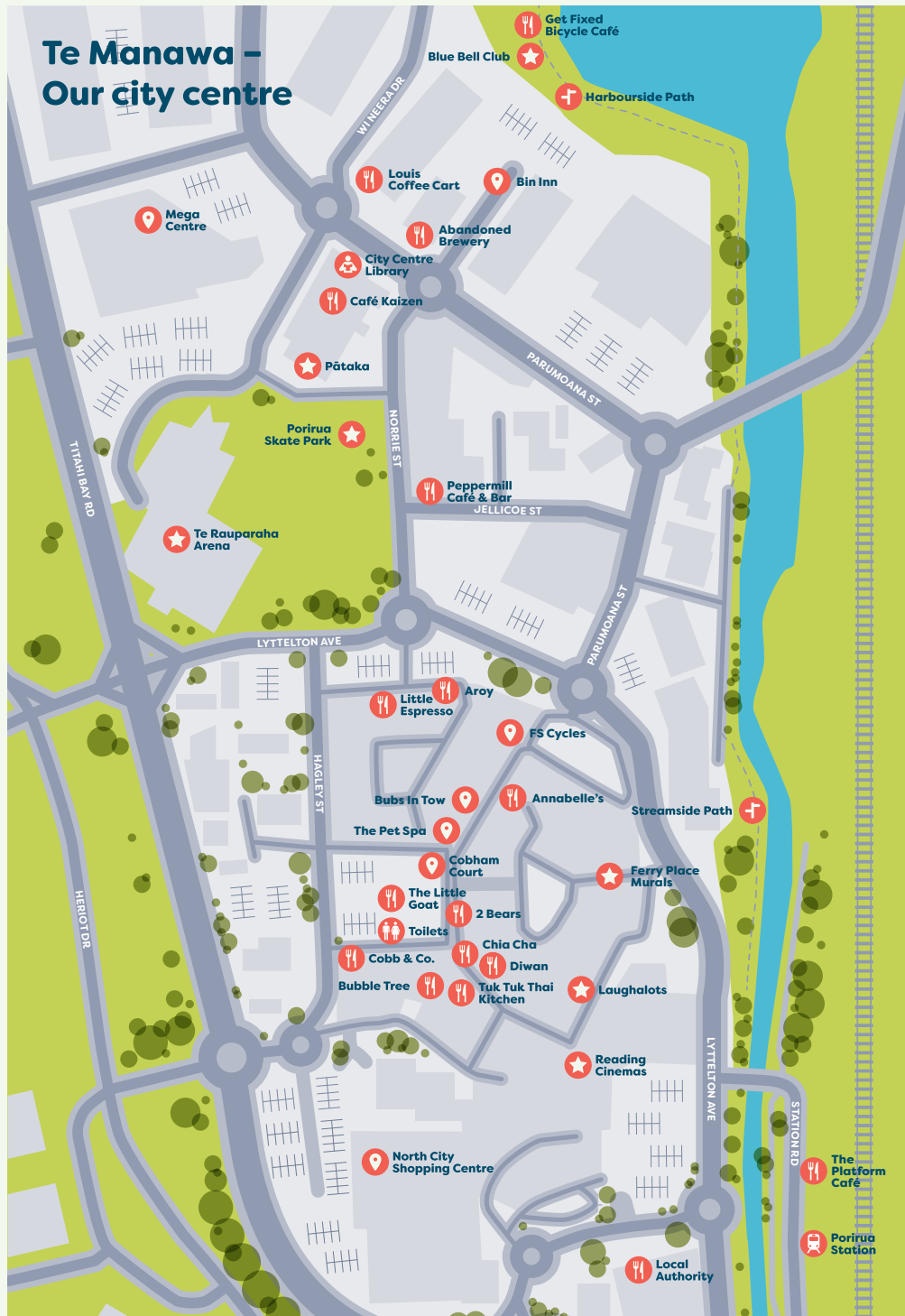
Take the path up the hill at the southern end of the Bay for spectacular panoramic views. You can even spot the South Island on the horizon!



Ahihi Afternoon
t bay café
 26 Whitehouse Road, Titahi Bay

Experience the Bay's hottest café, known for great coffee, service and incredible food. Dogs are welcome on the deck or find a table in the courtyard.

Te Manawa – Our city centre



Porirua City

- Places
- Libraries
- Paths & trails
- Activities
- Eat & drink



Places to discover

Eat & drink

Greedy & Co.

98 Rawhiti Road, Pukerua Bay

t bay café

26 Whitehouse Road, Titahi Bay

The Little Goat

Cobham Court

Bubble Tree

16 Hartham Place North

Ruby's Café

99 Mana Esplanade, Paremata

Local Authority

1 Walton Leigh Avenue

Little Green Olive

Dolly Varden Beach, Paremata

Gear Eatery & Bar

Gear Homestead, Okowai Road, Aotea

Get Fixed Bicycle Café

16 Parumoana Street

Aroy

3B Kilkerran Place

Sandbar

109 Mana Esplanade, Paremata

Peppermill Café & Bar

4 Norrie Street

Abandoned Brewery

20 Parumoana Street

Beer Engine

31 Whitehouse Road, Titahi Bay

Paths & trails

Te Ara Piko

Pāuatahanui

Bothamley Pathway

Bothamley Park

Te Ara a Rangituhi/Colonial Knob

Porirua Scenic Reserve

Te Araroa: Escarpment Track

Pukerua Bay Station/Beach Road, Paekākāriki

Harbourside/Streamside Paths

Wi Neera Drive/Station Road

Spicer Link Track

Spicer Botanical Park, Broken Hill Road

Southern Clifftop Walk

Beach Road, Titahi Bay

Places

Aotea Lagoon

Papakōwhai Road, Papakōwhai

Battle Hill Farm Forest Park

Pauatahanui

Titahi Bay Beach

Beach Road, Titahi Bay

Ngāti Toa Domain

6F Pascoe Avenue, Paremata

Onehunga Bay

Whitireia Road, Titahi Bay

FS Cycles

2 Serlby Place

Libraries

Cannons Creek Library

18 Warspite Avenue

City Centre Library

17 Parumoana Street

Pukerua Bay Library

6A Wairaka Road

Titahi Bay Library

18A Whitehouse Road

Whitby Library

69 Discovery Drive

Activities

Te Rauparaha Arena

17 Parumoana Street

Pātaka Art + Museum

17 Parumoana Street

Laughalots Playland

Lydney Place South

Pirate's Cove Adventure Golf

2 Wi Neera Drive

Awesome Bounce

8C Mohuia Crescent

Indoor Raceway

3 Raiha Street

NZ Police Museum

Papakōwhai Road, Papakōwhai

Adrenalin Forest

Okowai Road, Aotea

North City Ten Pin Bowling & VR Arcade

35 Kenepuru Drive

We love Porirua City and we think you will too.

Nau mai, haere mai! Over winter and spring, we invite you to explore our galleries, museums, and beautiful outdoors, enjoy a coffee and delicious kai and bring the tamariki to burn off some energy.

For up-to-date info about events head to porirua.govt.nz/discoverporirua

On the cover: The Pāuatahanui Inlet at night

Photo: Frank Hopfler



#discoverporirua

Disclaimer: To the best of our knowledge, the information contained in this guide is accurate and reliable as of the date of publication.



This document is printed on an environmentally responsible paper, produced using Elemental Chlorine Free (ECF), Third Party certified pulp from Responsible Sources, and manufactured under the strict ISO14001 Environmental Management System.